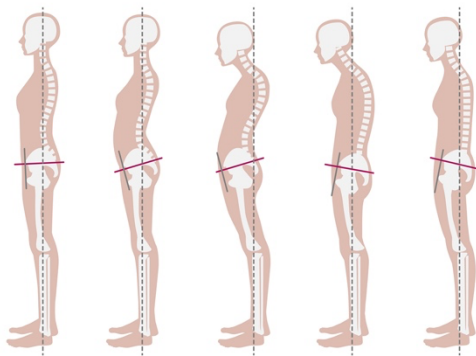




Synergetic Myofascial Method and Functional Movement Assessments Lower Crossed Syndrome
 Biloxi, MS November 1-2, 2025 – 12-hour CE
With Structural Integrator Magnus Eklund LMT 144, BCSI

This 12-hour CE course includes PowerPoint lectures on the history, scientific research & strategies of fascial bodywork & manual therapy demonstrations of turnkey advanced myofascial techniques with active & passive client movement based on the work of Dr. Ida P. Rolf. Workshop addresses Lower Crossed Syndrome which is based on postural dysfunction theories of Dr Vladimir Janda: Abdomen, Respiratory diaphragm, psoas, iliacus, Gluteal myofascia, Thoracolumbar fascia, Lumbar spine, Latissimus dorsi, QL, hips, pelvis, sacrum, legs and pelvis postural and movement dysfunction, & more. Synergetic™ Myofascial Therapy includes a variety of easy-to-use advanced fascial therapy techniques, rocking, movement, functional assessments & assisted stretching to solve pain and dysfunctional mobility patterns. Magnus has with manual therapy legend Emmett Hutchins the protégé & successor of Dr. Ida Rolf. He is KMI/AT certified Structural Integration Practitioner by Tom Myers, & a Guild Advanced Structural Integration Practitioner. Magnus has worked with many professional athletes in the Olympic games, NFL players & more. He has studied with Vedic Thai bodywork master Mukti Michael Buck. He works with mobility dysfunction, pain patterns & postural dysfunction in his clinic in Biloxi, MS.



Cost: \$425 register on website

Times: November 1-2, 2025 – 12 CE hours

Contact: Magnus (601) 500-0337

magnusmindandbody@gmail.com

Class: 12 CE hours in person course.

Location: Mind & Body Inc – 2628 Executive Place, Biloxi MS 39530

Magnus: (601) 500-0337 - www.mindandbodyinc.com.

For more information and sign-up visit:

<http://www.mindandbodyinc.com/>

Approved provider: FL/GA 50-9284, NCBTMB 450063-06, MS 29, LA 122, AL - CE broker course # 20-1090966

Note: This workshop is not meant to substitute for traditional medical care, nor diagnose medical conditions, nor manipulate bones, but to educate LMTs on how to safely apply massage techniques on clients. if you have health concerns, please consult your healthcare provider prior to attending. We reserve the right to cancel the workshop for any reason. Magnus and Bobbi Eklund are licensed massage therapists (MS144&2629), and CE provider for massage therapy. Magnus & Bobbi Eklund are not Rolfers™, nor do they teach Rolfing™. Magnus is not affiliated with KMI/AT SI nor IASI. Organizers & Magnus Eklund/Mind & Body Inc. are not responsible for future use of course techniques. Check CE with your state board prior to sign-up.